

eliminating racism  
empowering women

**ywca**  
of richmond



## Annual Report 2015

---

YWCA of Richmond is dedicated to eliminating racism, empowering women, and promoting peace, justice, freedom, and dignity for all.

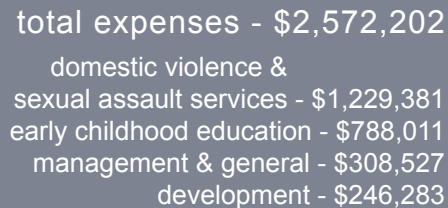
# Financial highlights

<b>assets</b>	<b>2015</b>	<b>2014</b>
cash & cash equivalents	\$368,956	\$307,793
net contributions receivable	\$175,370	\$187,990
grants receivable	\$109,351	\$54,675
other receivables	\$42,942	\$40,116
prepaid expenses	\$32,501	\$36,345
other current assets	\$2,695	\$2,695
investments	\$1,636,870	\$1,636,186
net property and equipment	\$1,739,397	\$2,068,247
	<b>\$4,108,082</b>	<b>\$4,334,047</b>

## **total assets**

## **liabilities & net assets**

total liabilities	\$115,248	\$231,864
net assets		
unrestricted	\$3,690,334	\$3,928,519
temporarily restricted	\$302,500	\$173,664
total net assets	\$3,992,834	\$4,102,183
<b>total liabilities &amp; net assets</b>	<b>\$4,108,082</b>	<b>\$4,334,047</b>





## 2015 Outstanding Women Awards

**Arts** Ana Ines King

**Business** Marilyn H. West

**Education** Dr. Geneene LeRosen

**Health & Science** Dr. Melissa Byrne Nelson

**Human Relations & Faith in Action** Susan Brown Davis

**Law & Government** Mary E. Langer

**Nonprofit Management** Kathy Glazer

**Volunteerism** Judy Anderson

### Presenting Sponsor

Bon Secours Health System

### Diamond Sponsor

Altria

### Honoree Table Sponsor

Dominion Resources

### Gold Sponsor

MeadWestvaco Foundation

### Leadership Forum Sponsor

Capital One

### Silver Sponsor

Wells Fargo

### Bronze Sponsors

Barber Martin Agency

Genworth Financial

Hunton & Williams

Troutman Sanders

### Media Sponsors

NBC12

Richmond Times-Dispatch

WCVE

### Table Sponsors

Bank of America

Bill & Pam Royall

CarMax

Davenport & Company

Jenkins Foundation

Markel Corporation

NewMarket Corporation

PricewaterhouseCoopers

SunTrust

Virginia Credit Union

Richmond Chapter of

The Links, Inc.

### Volunteers

Circle of Friends



## Early childhood education program served 75 children in 5 classrooms



- ➔ We hired a new Director of Child and Family Development with 30 years of experience in early childhood education.
- ➔ We engaged Philip Reese Research and the Mom Complex to conduct market research that informed our new mixed income business model.
- ➔ We began developing a new Reggio Emilia inspired curriculum with guidance from Sabot at Stony Point to implement in 2015.



200%

All children live at or below 200% of the federal poverty level.



100%

Of the 34 children who transitioned, 100% were ready for kindergarten.



95%

During the school year, 95% of parents engaged in their child's education.

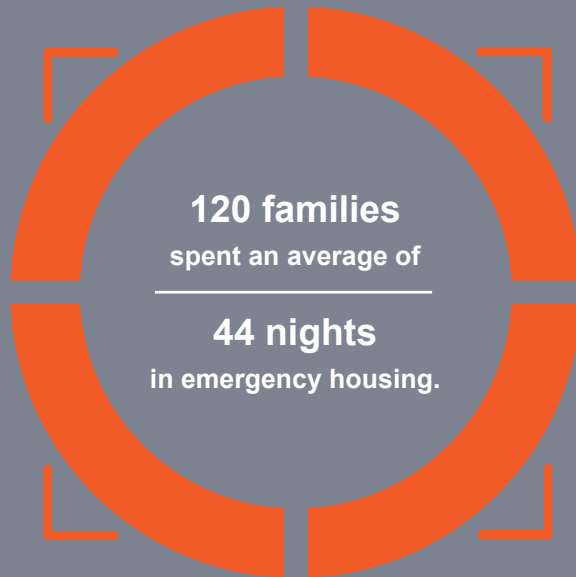
# Empowering survivors of domestic violence & sexual assault



More than 600 hours of counseling and case management were provided.



\$100,000 in financial assistance was available to 120 survivors to secure permanent housing.



60 clients began working with our workforce navigator. Since July, 18 are employed.



20 survivors used preschool services for their children.

**467**



Emergency room hospital accompaniment advocates responded to 467 calls to support survivors in crisis.

**4,653**



The Greater Richmond Regional Hotline received 4,653 calls annually from survivors and advocates.

**Hotline #: 804.612.6126**

## **Domestic violence & sexual assault crisis response programs**

We launched the Greater Richmond Regional Hotline, our local, collaborative, crisis response system for survivors across the region impacted or affected by domestic, intimate partner, and/or sexual violence.

Program partners include: Safe Harbor, Hanover Safe Place, Project Hope at Quin Rivers, The James House, and Goochland Free Clinic and Family Services.

## **Educational outreach**

Education and prevention workshops served more than 900 youth across the region.

Intimate partner violence resources were available through 102 presentations, reaching 4,300 participants.

6 north 5th street  
richmond, va 23219

804.643.6761

[www.ywcarichmond.org](http://www.ywcarichmond.org)

**eliminating racism  
empowering women**

**ywca**  
of richmond